

# Disney Alice in Wonderland

## PROLOGUE

(#1 - OPENING: ALICE'S THEME.)

### Opening: Alice's Theme

Broad, exciting ♩ = 124



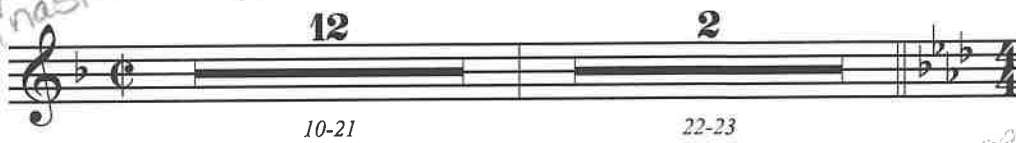
(THE WHITE RABBIT races across the stage with a watch.)

(At center stage, he turns to the audience and waves (or winks!), as if saying "see ya soon!" He looks at his watch and scurries offstage.)

A bit brighter ♩ = 134

rit.

grab large timepiece

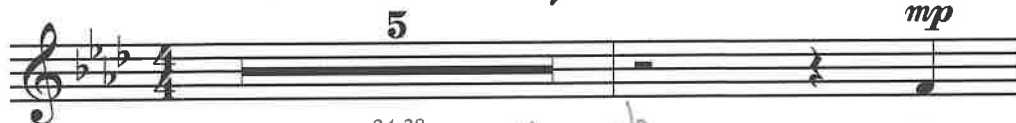


(An ENSEMBLE appears mysteriously, dressed as the Wonderland characters.)

Ominous, grand ♩ = 118

WONDERLAND ENSEMBLE:

whole cast enters - sneaky ominously  
Wonderland ensembles 2 groups



moving through water

Oh,

30 *frozen in interesting poses!* *change to pose 2*

Al - ice, dear, where have you been? So

33 *change to pose 3*

near, so far, so in - bet-ween? What

36 *look ↑ R*

have you heard, what have you seen? Al-ice,

*Alice enters w/ magnifying glass*

(ALICE enters with a magnifying glass in front of her face, possibly emerging from behind the WONDERLAND ENSEMBLE. ALICE is looking for something, analyzing the ground, the sky. The ENSEMBLE stands around her, but ALICE doesn't hear them.)

39 *lock ↓ L* *roll head ↓ stop R snap L* **ENSEMBLE GROUP 1: *mf*** *unfreezes + bows on acknowledge as she passes*

Al-ice, oh, Al-ice. Oh,

(ENSEMBLE GROUP 1): WONDERLAND ENSEMBLE:

42

tell us, are you big or small? It's

**ENSEMBLE GROUP 2:** *group 2 unfreeze*

*group 3 unfreeze* To try this one or try them all?

(WONDERLAND ENSEMBLE):

46 *group 3 unfreeze*

such a long, long way to fall. Al-ice,

49 Al-ice, oh Al-ice,

*parts on boxes R foot forward tall off*

*Alice kneels stage R*

*heavy step for all else*

*move to dance spot's pos. 2*

51

How can you know this way, not that? You

53

*big step fall body forward back point cross point*

choose the door you choose the path. Per-

55

*point* *point double*

haps you should be coming back a -

56

*press reach jazz hands to her*

*Alice moves center move to pos. 3*

nother - er day, a - nother - er day. And

58

*pose* *pose*

noth - ing is quite what it seems. You're

59

*hands to head creeps nap towards Alice*

**ENSEMBLE GROUP 1:**

dream-ing. Are you dream-ing? Oh, Al-ice. So

62

*R hand reach L hand reach to nothing*

*reach + pull back 1 vs. 2*

man - y doors, how will you choose? So

**ENSEMBLE GROUP 2:**

*3x*

So man - y doors,

63

much to gain, so much to lose. So  
how will you choose?

**WONDERLAND ENSEMBLE:**

64

man-y things get in your way. No time to wait. No time to waste.  
step into get closer

*stand straight hands to sides Alice steps on box*

66

Be care - ful not to lose your head and

68

list - en to your heart in - stead.

*roll down to toes snap up tree limbs 4 steps counter clockwise*

**(WONDERLAND ENSEMBLE):**

*(Suddenly, MATHILDA enters with FRIEND 1 and FRIEND 2, searching for ALICE. They cannot see the WONDERLAND ENSEMBLE.)*

69

Al - ice.

*open back up to pull fists to sides*

**MATHILDA:**

71

Al - ice. Al - ice. Oh...

*step back enter R w/ friends reach run*

Al-ice? Al-ice?! AL-ICE!

*all exit*

*Flowers to positions on remove caps as kids run past*

*(The song ends abruptly. The WONDERLAND ENSEMBLE disappears, exiting swiftly, unseen by MATHILDA.)*

**ALICE**

*(barely looking up from her investigation)*

What?

**MATHILDA**

*(a bit embarrassed by her sister's odd ways)*

Alice...What are you doing...?

**ALICE**

*(focused, professorial)*

*step up on box*

I'm not Alice! I'm Professor Alabaster, on a search for a rare rainbow caterpillar.

**FRIEND 1**

Is there even such a thing?

*(FRIEND 1 and FRIEND 2 giggle. MATHILDA steps in.)*

**MATHILDA**

Forget my sister. She's always got her head in the clouds.

*1 2 M A  
1 2 M A*

**ALICE**

No, I don't.

**FRIEND 2**

*(to MATHILDA)*

Didn't you say that last week she had a tea party... by herself??

**ALICE**

*(looking up for the first time from her caterpillar quest)*

Not true!

*(to the FRIENDS, now with a royal posture and tone, maybe even an accent)*

You see, I had to throw a party to welcome my constituents. They traveled by boat to see me crowned "Princess Alissa, Ruler of the Land"!

**FRIEND 1**

...What?

FRIEND 2

You have imaginary friends, Alice?

ALICE

*(hurt; to herself)*

That's Princess Alissa to you.

FRIEND 1

*(patronizing)*

Oh, Alice. You spend way too much time playing make-believe.

FRIEND 2

You'll see when you're older. That's just kid stuff.

FRIEND 1

Come on, Mathilda. Let's go.

*exit R*

*(The two FRIENDS exit. ALICE sits, defeated. MATHILDA lingers behind to comfort her sister.)*

*walk her to center box she sits*

MATHILDA

*(trying to soften the blow)*

Alice. Look. They're not trying to be mean. But you're always making up stories. Always pretending to be someone you're not. A Professor... a Princess... just be yourself.

*look up*

ALICE

But... who am I?

MATHILDA

I don't know who you are, Alice. That's something no one can answer but you.

*exit R*

(#2 - IN A WORLD OF MY OWN.)

# In a World of My Own

*(MATHILDA exits. ALICE stands center stage, thinking.)*

Wistful ♩ = 138

*3 begin following*

ALICE: *mp*

Cats and

*1-3*

The musical notation shows a treble clef with a key signature of one flat (B-flat) and a 4/4 time signature. The first measure contains a whole note with a fermata, marked with a '3' and the handwritten note 'begin following'. The second measure contains a whole note with a fermata, marked with '1-3'. The third measure contains a half note G4, marked with 'ALICE: mp'. The fourth measure contains a half note A4, marked with 'Cats and'.

5  

 Musical staff with notes and lyrics: rab - bits would re - side in fan - cy lit - tle

7  
*Show house w/ hands*  

 Musical staff with notes and lyrics: hous-es and be dressed in shoes and hats and  
*point point*

9  
*roll down R leg*  

 Musical staff with notes and lyrics: trous-ers in a world of my own.  
*flowers enter stage*  
*spin around 2x closer to flowers*

13  

 Musical staff with notes and lyrics: All the flow - ers would have ver -  
*run to them*

15  
*A →*  

 Musical staff with notes and lyrics: y ex - tra spe - cial pow - ers. They could  
*poof hands*  
*awake & roll up hands*

17  
*sorority quart*  

 Musical staff with notes and lyrics: sit and talk to me for ho - urs when I'm  
*lean towards her*  
 rit.

19  

 Musical staff with notes and lyrics: lone - ly in a world of my  
*cross legs*  
*turn away*  
*roll bodies back to frozen*

21  

 Musical staff with notes and lyrics: own. Books are  
 Fast Pop ♩ = 146  
*1st 2 3 determined jump f*  
*excitedly run to center*

23 *run around center box*  
bor - ing! I would rath - er live\_ my life ex -

25 *step up stretch arms*  
plor - ing, \_ solv - ing myst - 'ries on \_ a voy - age

27  
tour - ing \_ through a world

29 *jump down*  
\_ of \_ my own. \_ No more

31  
troub - le, for the great - est prob - lems would be

**poco rit.**

33  
things a child \_ could un - der \_ stand. \_

35 *mf*  
May - be some - how, if the world

37 *tap R tap L*  
\_ could run \_ on dreams and make - be -



39 *confetti* *hands to self*

lieve and fun, — then I could be most

41 *hop hop hop*

an - y - one! My

**rit.**

44

world would be a won - der -

(Throughout the previous verse, the WONDERLAND ENSEMBLE has entered, a few at a time, as if conjured by ALICE. They look at her supportively, lovingly. ALICE cannot see them.)

**Slower, dreamy** ♩ = 138  
3x

*climb up on center box*  
**ALICE:** A wonderland that's all my own...where anything is possible... where I can be anything...anyone...

46

*fans enter land. flowers exit*

(The WONDERLAND ENSEMBLE begins to entrance ALICE to sleep.)

**ENSEMBLE GROUP 1:**

48 *mp stretch + yawon*

Life could be a won - der -

**(ENSEMBLE GROUP 1):**

50

land.

**ENSEMBLE GROUP 2:**

*mp*

Life could be a won - der -

52 *A gets picked up & carried sideways & laid down*

Life could be a wonder-land.

54 *accel.* *fans in position*

land. a wonder...

Life could be a wonder...

*Dance ensemble entering up sides*

**WONDERLAND ENSEMBLE:**

56 *mf sweep R* *Sweep L*

Past the rain-bow,

58 *diagonal* *3*

fol-low the bright-est star. Your

60 *Sweep L* *sweep R*

heart will lead you

62 *Alice asleep center front*

straight to who you are.

*fans turn over R shoulder around self*

64



Straight to who you are!

*fast run off*

(Now that ALICE is fully asleep, the WONDERLAND ENSEMBLE lights up, as if ready to tell their tale. Showtime!)

**Faster Swing** ♩ = 150

*Amelia's  
chores*

66



*f*


Al - ice in Won - der - land!

68




How do you get to Won - der - land?

70



O - ver the hill or un - der - land or

72




just be - hind the tree? \_\_\_\_\_

74




Al - ice in Won - der - land!

76

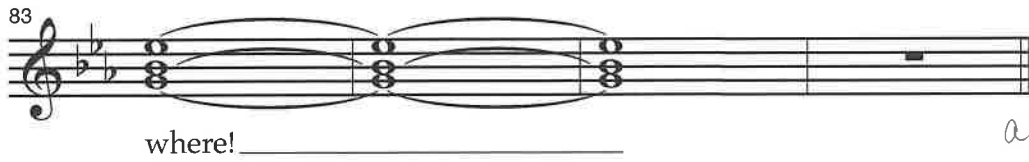


Where is the path to Won - der - land?

78



O - ver the hill or here or there? \_\_\_\_\_



*all exit*

*(Applause! The WONDERLAND ENSEMBLE exits excitedly. Three parts of the CHESHIRE CAT remain onstage with a gigantic smile and address the audience.)*

*animated + sassy*

**CHESHIRE CAT 1**

Alice is about to discover that Wonderland is far more than she expected.

**CHESHIRE CAT 2**

It's a land of racing lobsters, singing flowers, painting cards, and even a talking Cheshire Cat... That's me!

**CHESHIRE CAT 3**

You mean us. But I—

**CHESHIRE CAT 1**

Meaning me—

**CHESHIRE CAT 3**

That is, we—

**CHESHIRE CAT 1**

Come into the story later.

**CHESHIRE CAT 2**

Alice's journey to Wonderland begins with a pallid, long-eared, carrot-munching quadruped known only as...

**CHESHIRE CAT 1, 2, 3**

The White Rabbit!

*gesture stage L*

**(#3 – THE WHITE RABBIT – PART 1.** *The CHESHIRE CAT gestures offstage, setting up a big entrance. Nothing. They look at each other awkwardly, then smile at the audience and try again.*)