

CHESHIRE CAT 2

Ahem, I saiid... Alice's journey begins with...

CHESHIRE CAT 1, 2, 3

The White Rabbit!

gesture again

(#4 - THE WHITE RABBIT - PART 2. Nothing.)

CHESHIRE CAT 2

Oh, he's always late.

CHESHIRE CAT 3

(shouting offstage)

Yo, White Rabbit, you're on!

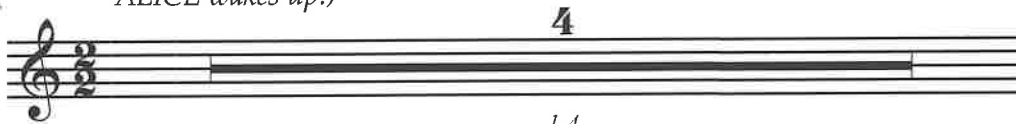
(#5 - I'M LATE.)

I'm Late

Hectic ♩ = 138

enter lower R

(The WHITE RABBIT runs on, staring at his pocket watch, very upset. ALICE wakes up.)



1-4

WHITE RABBIT: Not again!!!

pause

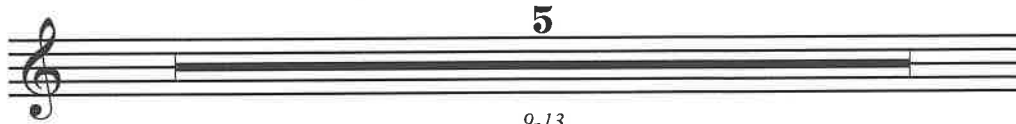
ALICE: *(seeing the WHITE RABBIT)* Whoa! How cool is that!
(beat) What's the right thing to say to a talking rabbit...?



5-8

WHITE RABBIT: Oh dear, dear, dear!

ALICE: Um, hi, my name is—



9-13

14 **WHITE RABBIT:**



Oh, no! Oh, no! Oh, no! Oh, no! I'm

17
late, I'm late for a

19
ver - y im - por - tant date! No

ensemble enter from to pos. 7

(The WHITE RABBIT shows ALICE the time on the pocket watch.)

21
time to say, "hel - lo." Good - bye! I'm

Rabbit + all
ENSEMBLE
GROUP 1:

23
late, I'm late, I'm late, I'm late. He's

Rabbit
ENSEMBLE
GROUP 2:

25
o - ver - due. He's

R runs to stage L + running + wobble

WHITE RABBIT:

27
in a rab - bit stew. Can't

WONDERLAND
ENSEMBLE: all wave
WHITE RABBIT:

29
e - ven say, "good - bye." Hel - lo! I'm

31
late! I'm late! I'm late! I

*cross country ski
R run + freeze*

33 run and then I hop hop hop. I

L run + freeze

35 wish that I could fly. There's

*kick R hands over head
kick L*

37 dan - ger if I stop stop stop and

all turn in
WONDERLAND ENSEMBLE:

39 here's the rea - son why: We know! You're

switch sides through lines walking pos. 2

41 late. It's clear. So

turn ask
WHITE RABBIT:

43 why are you still here? I'll nev - er make it

WONDERLAND ENSEMBLE: *knees chest hands up*

46 now, I fear. You're late! You're late! You're late!

center again
ALICE: But where are you running to?
WHITE RABBIT: Well, since you asked:
you see, the Queen of Hearts is throwing this—

WONDERLAND ENSEMBLE: *move to 3 lines*

5

49-53

He's
R + A off to side h

pos. 3

55 **WHITE RABBIT:**
 got to go! I

57
 think my watch is slow. I wound it up, but

60
 now it's wound, it makes a fun - ny

62
 tick - ing sound... Tick tock, tick tock, tick
hands up to noon
CHESHIRE CAT 1: **CHESHIRE CAT 2:** **CHESHIRE CAT 3:**
same 2 *same 3*

64
 tock, tick tock. It's rather like a
L noon
CHESHIRE CAT 1: **ALL CHESHIRE CATS:** 10 11

66 *noon* **WHITE RABBIT:**
 clock. And thanks to that I have to run when
R + A cross to stage L across blocks in back Alice follows
move to pos. 4

69 **WONDERLAND ENSEMBLE:**
 I'd prefer to walk. He

71 *face ↓ stage in diagonal*
 real - ly hates to rush rush rush, it
R heel toe R/L *twirl arms low*
pointer fingers R/L

73 *R hand tray palm up L hand to side stand straight palm to temple spin head down + around*

makes him aw - fully diz - zy. But

75 *turn R 1/5 L foot snap in shake reigns 3 x* **WHITE RABBIT:**

still it's al - ways mush mush mush. It

77 **(WHITE RABBIT):**

hap - pens when you're bus - y!

WONDERLAND ENSEMBLE: *front mid*

Bus - y! Bus - y!

79 *R crosses to center*

Yes! Yes! And

back

Bus - y!

81 **(WHITE RABBIT):**

now as you can guess: no

83 **WONDERLAND ENSEMBLE:**

time to say, "hel - lo." Good - bye! You're *wave*

85

late! You're late! You're late!
knees chest up

ALICE: Curiouser and curiouser! Hadn't you better be going, then?

WHITE RABBIT: I don't believe I've explained myself quite fully. *move stage R*

WONDERLAND ENSEMBLE: You have! You have! - *act*

WHITE RABBIT: Please be quiet. Time is of the essence!

Polite ♩ = 123 *ensemble walks elegantly to next pos.*

87-93

94

Crazed ♩ = 138

WONDERLAND ENSEMBLE:

hard on knees ripple

The time is real-ly
step L tog. Ex towards center

97

fly - ing by; we must be hav - ing fun. But

100

WHITE RABBIT:

now there's no de - ny - ing. Why, I have-n't yet be -

103

WONDERLAND ENSEMBLE:

WHITE RABBIT: *move to center stage*

gun! Oh no! I must - n't

throw hands up split in 1/2

105

WONDERLAND ENSEMBLE:

stay. There must be no de - lay. And

WHITE RABBIT:

108

(WONDERLAND ENSEMBLE):

I'm

now you must be on your way.

act

110

late...

Now don't for - get to write. We

stage R push L

112

I'm

know your sched - ule's real - ly tight.

114

late...

Oh, look: It's half past ten; he

stage L push back to center

116

— I'm jump up

must be there and back a - gain.

118

late... I'm late! I'm

We know! So go!

122

late.

hoop ensemble enters w/a hoop each

Late, late, late, late, late, late, late,

rabbit move to final pos.

(WONDERLAND ENSEMBLE):

126

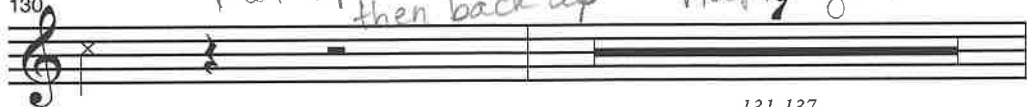
late...


| | | |
|--|-----------------------------|----------------------|
| WHITE RABBIT: (realizing the time) | WONDERLAND ENSEMBLE: | WHITE RABBIT: |
|--|-----------------------------|----------------------|

128

Wait! What?!?! I'm

pose exasperated

130 *run up to hole then back up* *hoops go into hole front to back*
 (The WHITE RABBIT scurries off, then pokes his head back on.)

 late! 131-137

138
 WHITE RABBIT: Well...
 WONDERLAND ENSEMBLE: *inside hand sweeps up*

 Late!

141
hoops point outside finger *hands on hips rabbit spotlighted*
 You're late!!!
hands on hips
 cross arms

*playoff all rabbit rush
 hoop stay for next song*

(The WHITE RABBIT jumps into a rabbit hole.)

CHESHIRE CAT 1

Alice followed the White Rabbit to the edge of the rabbit hole.

tap her on shoulder + point *Alice react*
 (The CHESHIRE CAT turns and stares at ALICE, who obediently walks to the rabbit hole and looks inside.)

ALICE

Well...this rabbit hole looks pretty deep and dark, and I can't see the bottom, and maybe it goes all the way to the center of the earth, and I'll be burnt to a crisp in the molten core.

(pause, then: with a hint of mischief)

Or... maybe it's the start of my great adventure!!

Alice follows rabbit